



Fix a Leak River Scavenger Hunt



This Fix a Leak month go on a water scavenger hunt along the Rivanna. Complete everything and submit your answers by April 9th to be entered in to win a special water saving prize!

Directions: Find water and leak related signs along the Rivanna River that will help you fill in important missing information on your scavenger hunt worksheet. You will see lots of signs along the trail with interesting information. Look for Detective Flo for signs that might help you on your scavenger hunt. Fill in all the missing text and submit your worksheet by April 9th to be considered for a special prize!

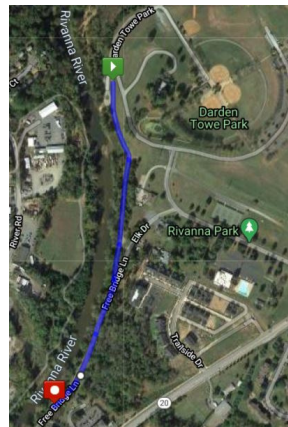
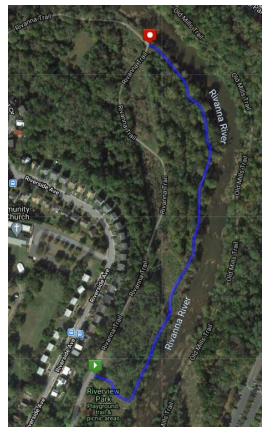


Important Reminder: Please follow park rules and social distance rules. Wear your mask and stay 6 feet apart from other park users.

Locations: The Rivanna River Trail from Riverview Park or Darden Towe Park

Riverview Park

298 Riverside Ave.
Start at the park's entrance and take the path along the Rivanna River.



Darden Towe Park

1445 Darden Towe Park
Start at the boat launch and take the path along the Rivanna River.

If you can't get to the Rivanna River, check out our virtual Rivanna River Walk to experience the Rivanna River and see all the water and leak related signs.

Charlottesville.gov/FixALeak

Submit your Responses by April 9th:

ONLINE: Charlottesville.gov/FixALeak

BY DROP BOX: City Hall (605 East Main St.) & ACSA (168 Spotnap Rd.)

BY MAIL: Water Conservation, 305 4th St. NW, Charlottesville, VA 22903



Charlottesville.Gov/FixALeak



Fix a Leak River Scavenger Hunt



Fill in the missing text!

- The average household leak can account for nearly _____ gallons of water wasted every year, or the amount of water needed to wash 270 loads of laundry.
- Fixing easily corrected household water leaks can save homeowners about _____ on their water bills.
- If the average family replaces its older, inefficient toilets with new WaterSense labeled ones, it could save _____ gallons of water per year.
- A running toilet could be wasting _____ gallons of water or more every day! Take the 10-Minute Leak Challenge and check your toilet for leaks! (*Charlottesville.gov/FixALeak*)
- The urban reservoirs for the Charlottesville area have the capacity to store _____ gallons of water.
- The average water provided to the urban water system of the Charlottesville area is _____ gallons of water a day. (*in 2019*)
- Rivanna Water & Sewer Authority performed _____ water lab tests to ensure water quality in the City of Charlottesville and Albemarle County is safe and meets or exceeds federal and state regulations.
- In 2020, The City of Charlottesville and Albemarle County Service Authority issued _____ WaterSense toilet rebates to their customers for replacing old, inefficient toilets with WaterSense labeled toilets.
- In 2020, the City of Charlottesville and Albemarle County Service Authority issued _____ rain barrel rebates to their customers for installing rain barrels and reducing their water waste outside.
- The City of Charlottesville and Albemarle County Service Authority offer _____ water conservation kits to all their utility customers, which include WaterSense labeled showerheads and faucet aerators.



Name: _____

E-mail: _____

Phone Number: _____

Where do you Live: City of Charlottesville

Albemarle County