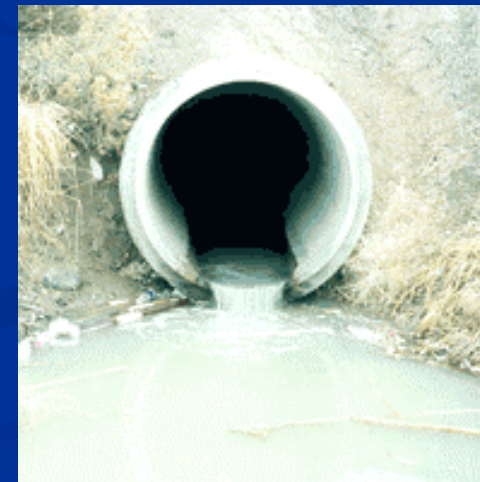


Stormwater Program Elements

- Educate the public on stormwater pollution prevention
- Involve the public in pollution prevention programs
- Develop programs for illicit discharge detection and elimination



Stormwater Program Elements (cont.)

- Development and enforce construction site stormwater runoff controls (including E&S)
- Develop a post-construction stormwater management program for new development and redevelopment
- Develop a pollution prevention/good housekeeping program for municipal operations

